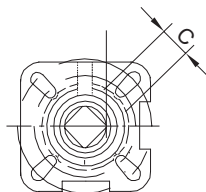
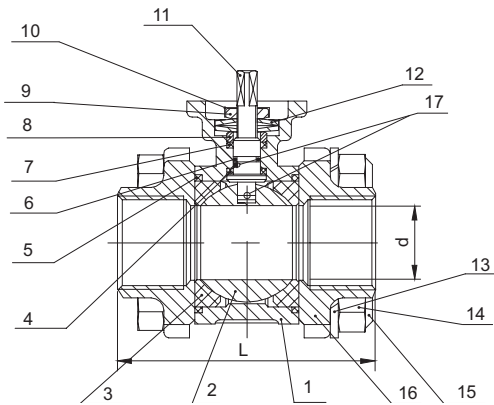




V203 Series, Direct Mount Pad, AISI316, BSP Threaded End, Full Bore Ball Valves



ISO5211



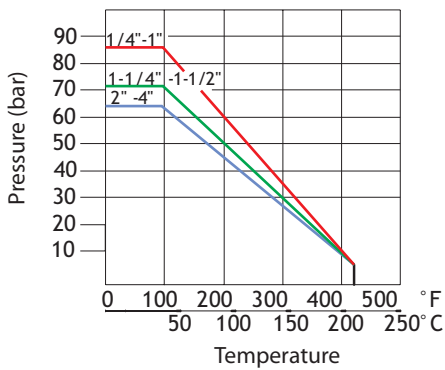
Material List

No	Part Name	Material	Qty
1	Body	AISI316	1
2	Ball	AISI316	1
3	Ball Seat	PTFE	2
4	Thrust Washer	PTFE	1
5	Body Gasket	PTFE	2
6	O-Ring	Viton	1
7	Stem Packing	PTFE	1
8	Gland Nut	AISI304	1
9	Nut	AISI304	1
10	Locking Washer	AISI304	1
11	Stem	AISI316	1
12	Belleville Washer	AISI301	2
13	Washer	AISI304	4 (Max 12)
14	Nut	AISI304	4 (Max 12)
15	Stud	AISI304	4 (Max 6)
16	Cap	AISI316	2
17	Anti-Static Device	AISI316	2

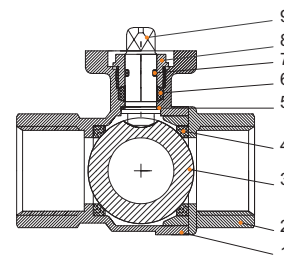
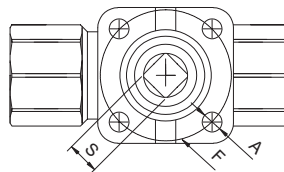
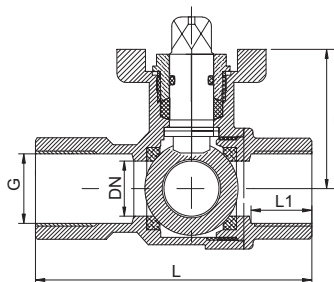
Dimensions (mm)

Size (DN)	d	L	C	ISO5211 Top Flange	Torque (N.m)	Weight (Kg)
1/4"	11	50	9	F03	4	0,46
3/8"	12,5	60	9	F03	4	0,48
1/2"	15	75	9	F03	5	0,51
3/4"	20	80	11	F04/F05	8	0,89
1"	25	90	11	F04/F05	10	1,27
1-1/4"	32	110	14	F05/F07	14	2,04
1-1/2"	40	120	14	F05/F07	18	3,00
2"	50	140	14	F05/F07	25	3,80
2-1/2"	65	185	17	F07/F10	48	7,80
3"	80	205	17	F07/F10	75	12,40
4"	100	240	17	F07/F10	110	20,80

Pressure Temperature Diagram



V204 Series, Direct Mount Pad, Brass, BSP Threaded End, Full Bore Ball Valves



Material List

No	Part Name	Material	Qty
1	Body	Brass (Nickel Plated)	1
2	Cap	Brass (Nickel Plated)	1
3	Ball	Brass (Nickel Plated)	1
4	Ball Seat	PTFE	2
5	Thrust Washer	PTFE	1
6	Stem Packing	EPDM	1
7	O-Ring	NBR	1
8	Gland Nut	Brass	1
9	Stem	Brass	1

Dimensions (mm)

Size (DN)	15	20	25	32	40	50	65	80	100
G	1/2"	3/4"	1"	1-1/4"	1-1/2"	2"	2-2/2"	3"	4"
L	75	80	90	112	127	142	161	185	215
L1	16,5	18,5	22	30	30	32	32	34	36
H	38	40	45	55	61	72,5	82,5	95	110
A	5,5	5,5	5,5	5,5	6,7	6,7	6,7	9	9
F	F03	F03	F03	F05	F05	F05	F07	F07	F07
S	9	9	9	11	11	14	14	14	17
Weight (Kg)	0,33	0,45	0,65	1,10	1,50	2,30	3,25	5,60	9,40